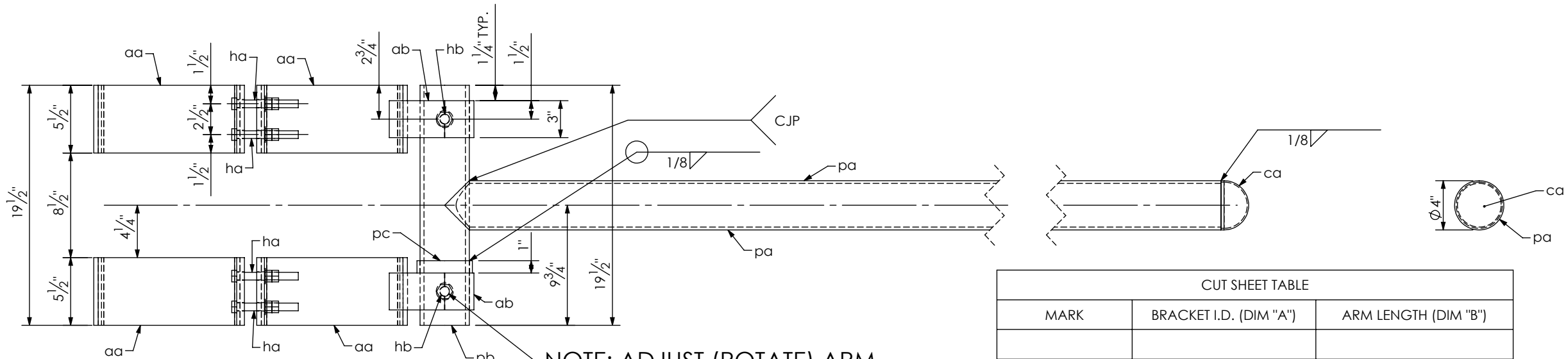
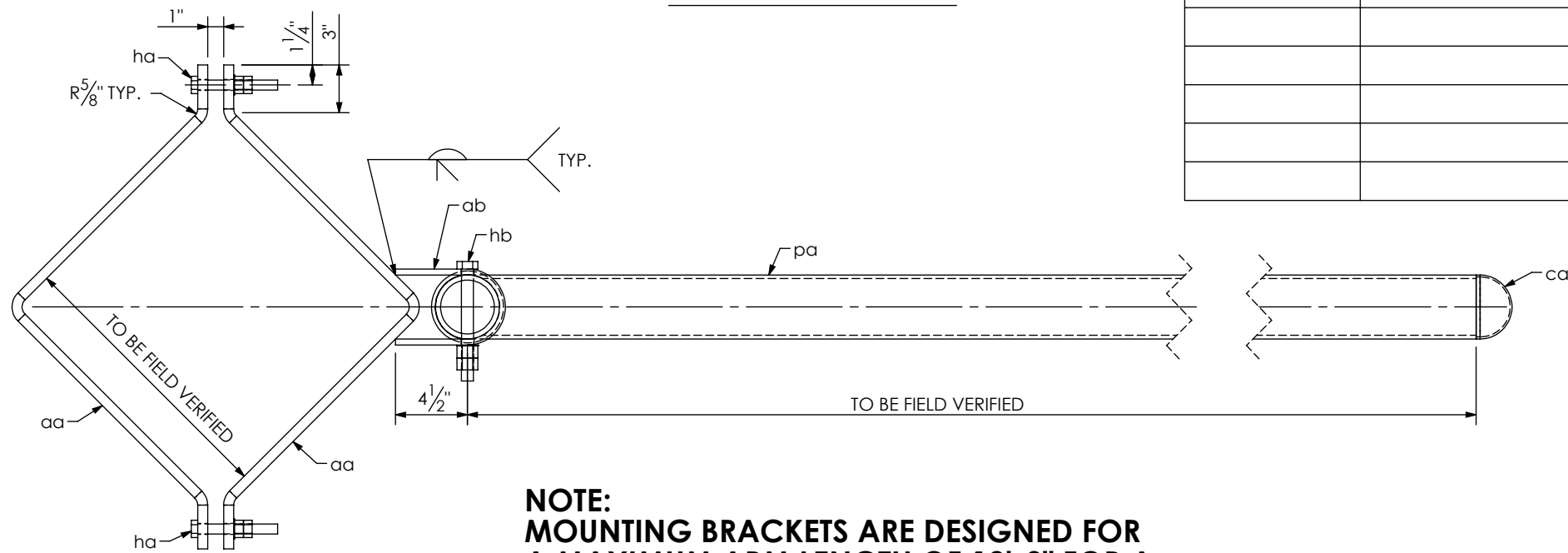


SHOP NOTES:
 -ALL PIPE TO ASTM A500, GRADE "C" OR API-5L-X52.
 -ALL SHAPES AND PLATES TO ASTM A572, GRADE 50.
 -ALL BOLTS SHALL BE ASTM A325.
 -ALL WELDS TO BE E70XX.
 -ALL BOLTS, NUTS, WASHERS SHALL BE GALVANIZED PER ASTM B633 (DEPENDING ON SIZE).
 -ALL PIPE, SHAPES AND PLATES SHALL BE GALVANIZED PER ASTM A123.
 -STRUCTURE MUST BE ASSEMBLED AFTER GALVANIZING TO ASSURE PROPER FIT-UP.
 -WIND DESIGN SPEED 130 OR 150 MPH.
 -SIGN ATTACHED WITH BRACKETS TO ALLOW IT TO BE FREE SWINGING.

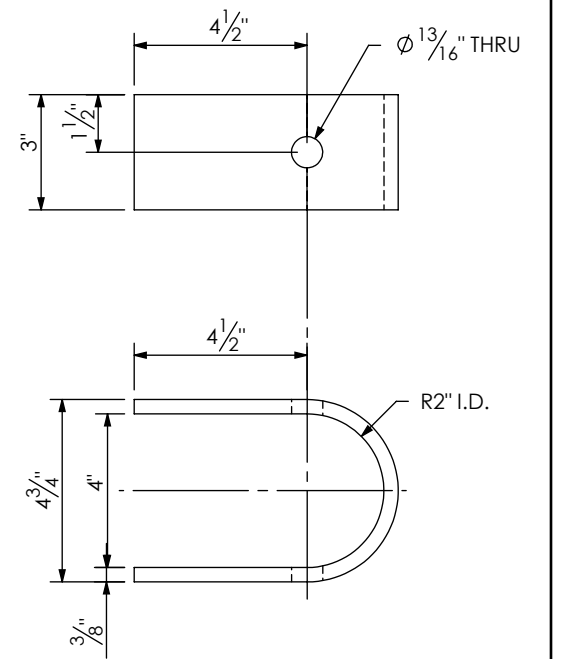


NOTE: ADJUST (ROTATE) ARM TO THE REQUIRED ANGLE & MATCH DRILL THRU "pb" AT FIELD INSTALLATION

CUT SHEET TABLE		
MARK	BRACKET I.D. (DIM "A")	ARM LENGTH (DIM "B")



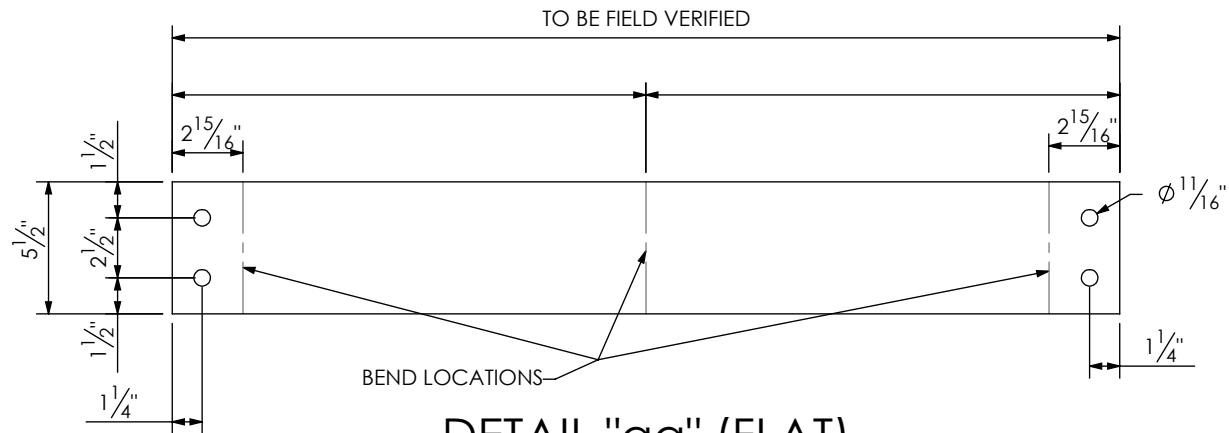
NOTE: MOUNTING BRACKETS ARE DESIGNED FOR A MAXIMUM ARM LENGTH OF 12'-0" FOR A 10' X 2' SIGN AT 150 MPH.



DETAIL "ab"

QTY LISTED IS FOR FAB OF 1 ARM

QTY.	MARK	DESCRIPTION
4	aa	PLATE, 5/8" X 5 1/2" X LG.
2	ab	PLATE, 3/8" X 3" X 1'-3 5/16" LG.
1	pa	PIPE, 4" O.D. X .226 W (SCH. 40) X LG.
1	pb	PIPE, 4" O.D. X .318 W (SCH.80) X 1'-7 1/2" LG.
1	pc	PIPE, 4 1/2" O.D. X .237 W X 1" LG.
1	ca	DOME CAP, 4" O.D.
8	ha	BOLT, HEX HD. 5/8" DIA. X 5" LG. W/ FLATWASHER & (2) HEX NUTS
2	hb	BOLT, HEX HD. 3/4" DIA. X 7" LG. W/ FLATWASHER & (2) HEX NUTS



DETAIL "aa" (FLAT)

HIGHWAY SYSTEMS INC.				
D.O.T. Sign Structure Division				
3373 NW 10th St., Bldg # 100, Ocala, FL 34475-4547				
DESCRIPTION: STANDARD DRAWING STATE OF FLORIDA	1st SUBMITAL	2nd SUBMITAL	3rd SUBMITAL	SHOP RELEASE:
FOR: STANDARD SINGLE ARM ADJUSTABLE BRACKET WIND DESIGN SPEED 150 MPH				
SCALE: NTS	APPROVED BY:	CHECK BY:	DRAWN BY:	DRAWING NUMBER:
DATE: 2/19/2013	JB	BB		1020-S
JOB NUMBER: HSI-				SHEET 1 OF 1